








Rhode Island Ocean Special Area Management Plan (SAMP)

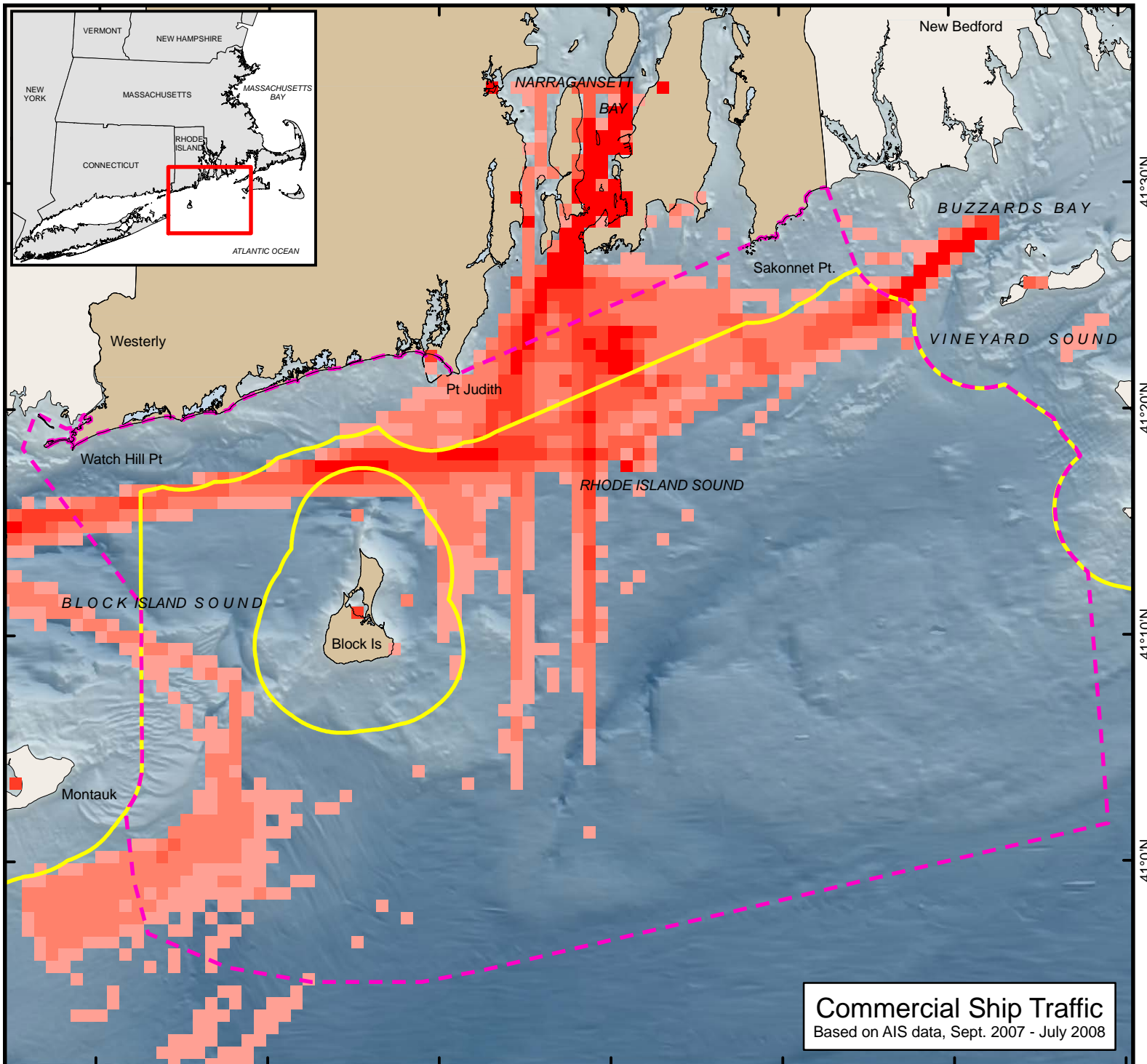
71°50'W 71°40'W 71°30'W 71°20'W 71°10'W 71°0'W 70°50'W

Map Key

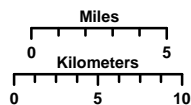
-  OceanSAMP Study Area
-  State/Federal Waters Separation

Automatic Identification System (AIS) Vessel Positions

-  50 - 100
-  101 - 250
-  251 - 500
-  501 - 1000
-  >1000



41°30'N
41°20'N
41°10'N
41°0'N



Coordinate System:
Projection: RI Stateplane
Units: Feet
FIPS Zone: 3800
Datum: NAD83

For Project Background Information:
<http://seagrant.gso.uri.edu/oceansamp>

For Project Map and Data Products:
http://www.narrbay.org/d_projects/oceansamp



Commercial Ship Traffic
Based on AIS data, Sept. 2007 - July 2008